

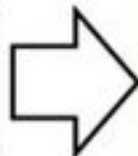
CORONADO¹ participants with diabetes



Outcomes within 28 days

- ✓ Death and/or IMV: 34.8%
- ✓ IMV: 20.5%
- ✓ Death: 20.1%

2210 pairs matched on age, sex, centre and hospital admission date for COVID-19



Influence of diabetes status on COVID-19 severity, controlling for age, BMI, comorbidity burden with updated Charlson's comorbidity index, clinical and biological admission parameters²



Residual risk attributable to diabetes on COVID-19 prognosis, HR [95% CI]

- ✓ Death and/or IMV: 1.30 [1.09; 1.55]
- ✓ IMV: 1.38 [1.11; 1.70]
- ✓ Death: 1.19 [0.93; 1.53]



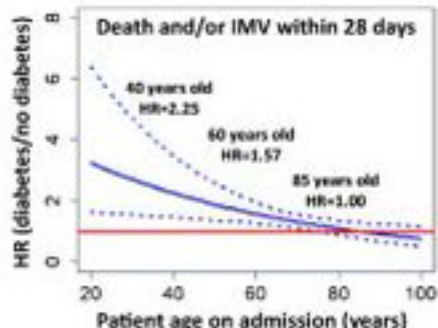
Residual risk attributable to diabetes on COVID-19 prognosis, according to age



Outcomes within 28 days

- ✓ Death and/or IMV: 28.4%
- ✓ IMV: 15.4%
- ✓ Death: 17.1%

CORONADO participants without diabetes



¹ Wargny M et al. Diabetologia 2021; 64:778-794

² Include time between symptom onset and admission, dyspnoea on admission, eGFR [CKD-EPI], aspartate aminotransferase, white cells count, platelet count and CRP

IMV: Invasive mechanical ventilation